

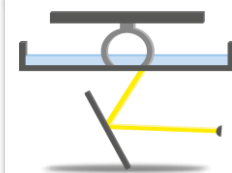
Larolux®

BASF is the first choice for high-performance radiation-curable resins. Our newly created Larolux® range has been set up enabling you creating photopolymer formulations for UV curable additive manufacturing tailored to your needs. The Larolux® range covers oligomers and monomers.

Applications

- Stereolithography (SLA)
- Digital Light Processing (DLP)
- Liquid Crystal Display (LCD)

Stereolithography (SLA)



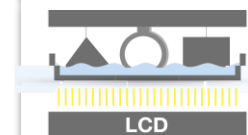
Imaging system:
laser

Digital Light Processing (DLP)

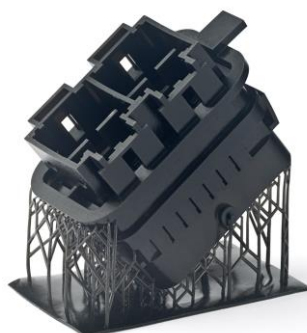


Imaging system:
Video Projector

Liquid Crystal Display (LCD)



Imaging system :
LCD screen



Larolux® Product selection

Product	Chemistry	Viscosity [Pa.s]*	Functionality*	Elongation [%]**	E Modulus [Mpa]**	Stress @ break (N/mm2) ***	Tg [°C]*
Larolux 1101	aliphatic urethane acrylate	~14	2,8	17	355	12	-38
Larolux 1102	aliphatic urethane acrylate	~8,5 [60°C]	2,9	28	184	14	-27
Larolux 1103	aliphatic urethane acrylate	~20	2,0	12	1150	10	27
Larolux 1201	aromatic epoxy acrylate	~4,5	2,4	4	2525	85	66
Larolux 1201 ECO	aromatic epoxy acrylate	~4,5	2,4	4	2525	85	66
Larolux 1202	modified aromatic epoxy acrylate	~3,5	2,3	4	2426	72	39
Larolux 1301	TMPEOTA	~0,075	3,0	4	2176	52	50
Larolux 1302	Amine modified polyether acrylated	~2,0	2,5	8	988	15	-
Larolux 1303	Amine modified polyether acrylated	~0,08	2,6	4	1414	33	-
Larolux 1304	Amine modified polyether acrylated	~0,45	2,6	6	1325	23	27
Larolux 1402	Polyester acrylate	~3 [60°C]	3,3	9	765	5	15
Larolux 1501	unsaturated polyester acrylate	~7,5	4,8	5	1293	40	-
Larolux POEA	Phenoxyethyl acrylate	~0,008	1,0	23	34	3	5

*measured in delivery form of product

** measured 3d printed; formulation 69% Resin, 30% DPGDA, 1% Omnirad® TPO

*** calculated using Fisherscope data

Contacts

Asia

BASF (China) Co.,Ltd.
No. 300, Jiangxinsha Road,
Pudong, Shanghai 200137
Phone: +86-21-2039-5213
dispersions-asiapacific@
basf.com

Europe, Africa, West Asia

BASF SE
Resins & Additives
E-EDE/RF – J550
67056 Ludwigshafen
Germany
resins@basf.com

North America

BASF Corporation
24710 W. Eleven Mile Road
Southfield, Michigan 48034
USA
Phone: +1 800 231-7868
dpsolutions@basf.com

South America

BASF S.A.
Av. das Nações Unidas, 14171
Cond. Rochavera
Crystal Tower
04794-000, São Paulo
Brazil
Phone: +55 11 2039-2735

Safety

When handling this product, please comply with the advice and information given in the safety data sheet and observe protective and workplace hygiene measures adequate for handling chemicals.

Note

The data contained in this publication are based on our current knowledge and experience. In view of the many factors that may affect processing and application of our product, these data do not relieve processors from carrying out their own investigations and tests; neither do these data imply any guarantee of certain properties, nor the suitability of the product for a specific purpose. Any descriptions, drawings, photographs, data, proportions, weights, etc. given herein may change without prior information and do not constitute the agreed contractual quality of the product. The agreed contractual quality of the product results exclusively from the statements made in the product specification. It is the responsibility of the recipient of our product to ensure that any proprietary rights and existing laws and legislation are observed.

® = Registered trademark

™ = Trademark of the BASF Group, unless otherwise noted

BASF SE
Dispersions & Resins Europe
67056 Ludwigshafen, Germany
www.basf.com/resins